

JBC

The Soldering Co.



Compact Stations

ALL-IN-ONE SOLUTION - THE KEY TO PRODUCTIVITY

Compact Stations

The all-in-one stations offer everything you need to enhance your productivity. They are easy-to-use stations with lightweight and ergonomic tools. All Compact Stations feature JBC Technology advantages.

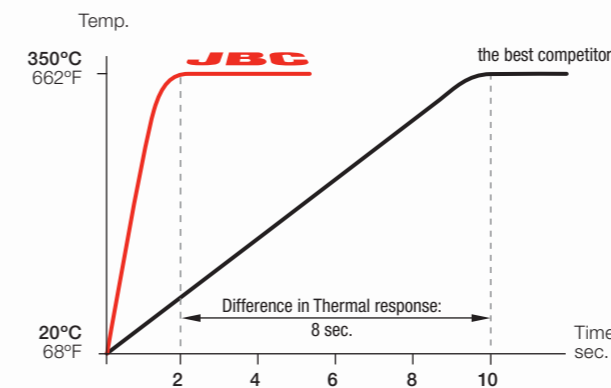
JBC Technology: Enhancing efficient, precise and high-quality soldering.

Most Efficient Soldering System

It recovers tip temperature extremely quickly. This increases work efficiency and allows the user to work with lower temperatures.

Heating System Principles

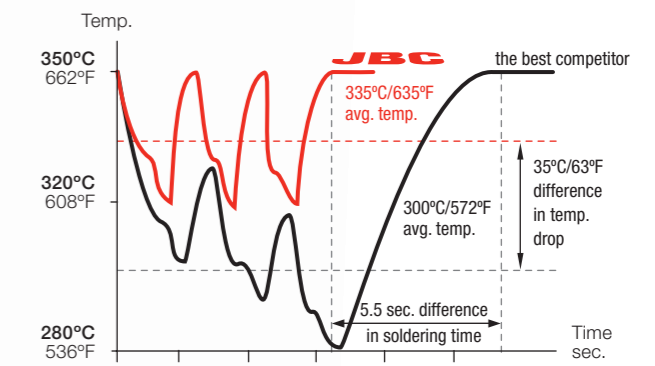
350°C/662°F in 2 seconds



This graph compares JBC C210 Cartridge Range to the equivalent cartridges of the best competitor.

Efficient Temperature Control

Comparative process of 3 solder joints

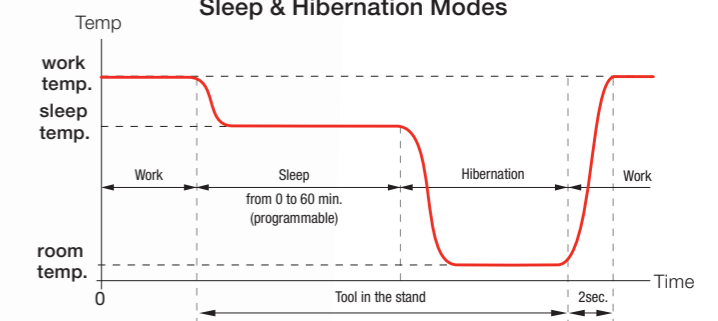


Tips with JBC Technology only drop 30°C (54°F) where others drop as much as 70°C (126°F).

Intelligent Heat Management

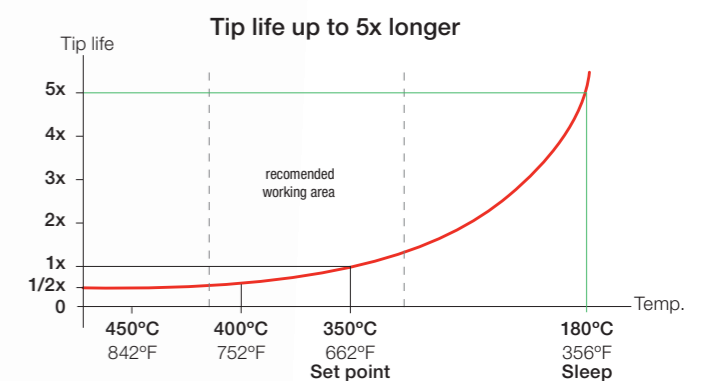
Thanks to automatic detection of the tool in the stand, JBC Soldering & Rework Stations allow the tools to enter **Sleep & Hibernation Modes** when not being used.

Sleep & Hibernation Modes



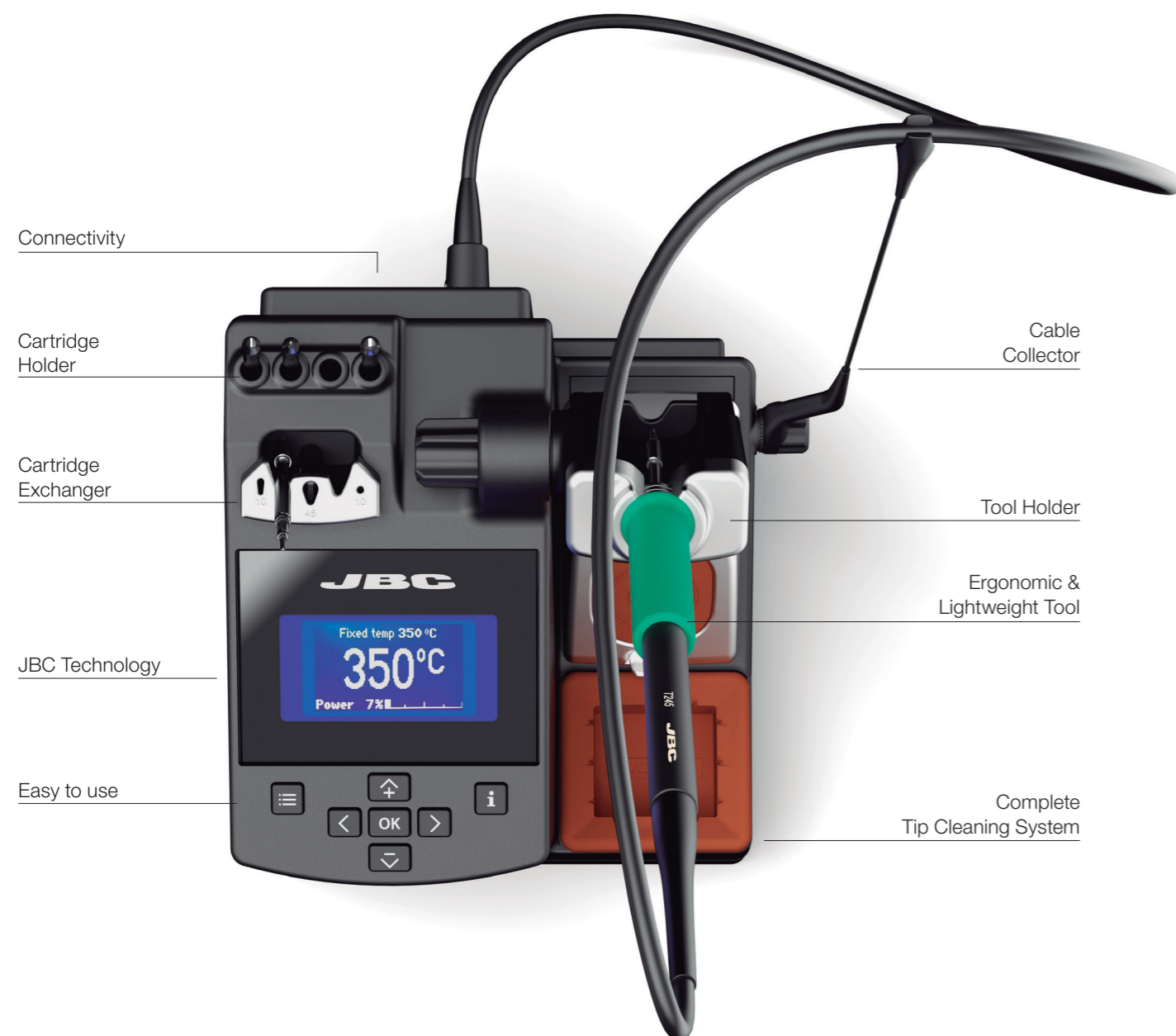
Longer Tip Life

Tip life increases exponentially by using lower temperatures as shown. Using Sleep Mode, the temperature is further reduced, which multiplies tip life by 5.



Everything you need in a minimum footprint

Compact Stations offer all of the JBC Technology in a modern and minimal design, combining a control unit, tool, stand, and tip cleaner to help you keep your workspace organized and focus on your projects.



Details make the difference



More than a Tool Holder

The stations incorporate Sleep & Hibernation Modes, which lower tip temperature when the tool is placed in the Tool Holder. As a result, JBC tips last up to 5 times longer.



Exchange cartridges quickly and safely

Each Cartridge Exchanger has been specially designed for each tool. You don't have to switch off the station to change cartridges, allowing fast and safe use of different tip geometries.



Track, update and connect

The USB connector allows you to manage your job remotely from a PC. You can connect your station to a Fume Extractor, download data, update the software, and keep traceability of the soldering processes.

Keep your tip clean and ready



Wiper

Eliminate the excess solder by tapping and wiping. The wiper is made of soft and high-temperature conductive silicone.



Sponge

The softest cleaning method to eliminate excess in any soldering or rework job. It allows you to maintain tips continuously clean by reducing their wear.



Brass Wool / Metallic Brush

Very effective cleaning method. Leaves solder on tip to prevent oxidation. Metal bristles for strong cleaning and tip recovery.

CDN High-precision Soldering Station

Designed for **highest-precision applications** in any **micro repair soldering job**, offering maximum control, also working under the microscope.

Cartridge Exchanger

The grip system not only provides a quick and safe exchange of cartridges but also prevents damage to the tiny tips of **C115 Cartridge Range**.

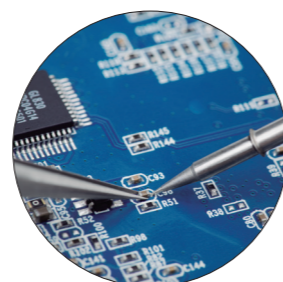


CL6210 Brass Wool

It prevents oxidation by leaving solder on the tip after cleaning.

NT115 Nano Handle

This handle provides the highest precision when soldering SMDs with short-distance tip-to-grip for better handling, even with a magnifying glass. Equipped with soft and non-slip grip for added comfort. It works with **C115 Cartridge Range**.



CDS Precision Soldering Station

Ideal when working on populated PCBs or under a magnifying glass.

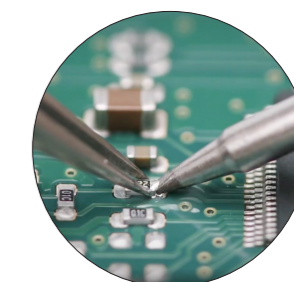


CL6220 Metal Brush

You can replace the brass wool with the metal brush for a more in-depth cleaning of the tips.

T210 Precision Handle

This handle is ideal for medium power soldering jobs on conventional or small SMDs, even under a magnifying glass. Ergonomic handle with short-distance tip-to-grip provides greater accuracy and comfort. It works with **C210 Cartridge Range**.



Specifications

Control Unit dimensions	170 x 176 x 145 mm / 6.69 x 6.93 x 5.71 in	Temperature Range	90 - 450 °C / 190 - 840 °F
Control Unit weight	2.7 Kg / 5.95 lb	Idle Temp. Stability (still air)	±1.5 °C / ±3 °F (Meets and exceed IPC J-STD-001)
Peak Power (tool)	25W	Temp. Accuracy	±3 % (Using reference cartridge)
Earthing Fuse	F 1.25A	Temp. Adjustment	±50 °C / ±90 °F (Through station menu setting)
Ref. - Voltage (AC) / Fuse	CDN-9QF - 100V 50/60Hz. Main fuse: T1A	Tip to Ground Voltage/Resistance	Meets and exceed ANSI/ESD S20.20-2014 IPC J-STD-001F
	CDN-1QF - 120V 50/60Hz. Main fuse: T1A		
	CDN-2QF - 230V 50/60Hz. Main fuse: T1A		
Connections	USB-B connector for PC communications	Complies with CE standards.	
	RJ12 connector for remote control or FAE Fume Extractor connection	ESD Safe.	

Specifications

Control Unit dimensions	170 x 176 x 145 mm / 6.7 x 9.2 x 5.7 in	Selectable Temperature	90 - 450 °C / 190 - 840 °F
Control Unit weight	2.8 Kg / 6.17 lb	Idle Temp. Stability (still air)	±1.5 °C / ±3 °F (Meets and exceed IPC J-STD-001)
Peak Power (tool)	40W - 23.5 V	Temp. Accuracy	±3 % (Using reference cartridge)
Earthing Fuse	F 1.25A	Temp. Adjustment	±50 °C / ±90 °F (Through station menu setting)
Ref. - Voltage (AC) / Fuse	CD-9SQF - 100V 50/60Hz / Main fuse: T2A	Tip to Ground Voltage/Resistance	Meets and exceed ANSI/ESD S20.20-2014 IPC J-STD-001F
	CD-1SQF - 120V 50/60Hz / Main fuse: T2A		
	CD-2SQF - 230V 50/60Hz / Main fuse: T1A		
Connections	USB-B connector for PC communications	Complies with CE standards.	
	RJ12 connector for remote control or FAE Fume Extractor connection	ESD Safe.	

CDB Soldering Station

Suitable for **general electronics applications**. This station is also available with the Soldering Assistant System under the reference CDEB.



S0354 Sponge

Place the sponge in the wiper for gentle cleaning with just one hand and to eliminate excess solder in soldering/rework.

T245 General Purpose Handle

Ideal for SMDs and high-power requirements like ground-plane soldering. Ergonomic handle with short-distance tip-to-grip for greater comfort and results. It comes with thermal insulation foam grip and 1.5m / 4.9ft cable. It works with **C245 Cartridge Range**.



Specifications

Control Unit dimensions	170 x 176 x 145 mm / 6.69 x 6.93 x 5.71 in	Selectable Temperature	90 - 450 °C / 190 - 840 °F
Control Unit weight	2.74 Kg / 6.04 lb	Idle Temp. Stability (still air)	±1.5 °C / ±3 °F (Meets and exceed IPC J-STD-001)
Peak Power (tool)	130W - 23.5V	Temp. Accuracy	±3 % (Using reference cartridge)
Earthing Fuse	F 1.25A	Temp. Adjustment	±50 °C / ±90 °F (Through station menu setting)
Ref. - Voltage (AC) / Fuse	CD-9BQF - 100V 50/60Hz. Main fuse: T2A	Tip to Ground Voltage/Resistance	Meets and exceed ANSI/ESD S20.20-2014 IPC J-STD-001F
	CD-1BQF - 120V 50/60Hz. Main fuse: T2A		
	CD-2BQF - 230V 50/60Hz. Main fuse: T1A		
Connections	USB-B connector for PC communications	Complies with CE standards.	
	RJ12 connector for remote control or FAE Fume Extractor connection	ESD Safe.	

CA Manual-Feed Soldering Station

Designed for those applications **requiring a free hand**. Ideal for soldering cables, connectors, etc.



Tool Holder

To ensure a perfect fit for each tool, every station has its own unique shape. Once the tool is placed in the stand, it will activate Sleep & Hibernation Modes.

CC1001 Cable Collector

Avoid any undesired movement in the tool while soldering and keep cables away from the soldering area.

AP250 Manual-Feed Soldering Iron

Great for repetitive tasks, this ergonomic tool provides maximum comfort. It dispenses tin with easy one-handed trigger control and includes an anti-rotation screw for cartridge alignment. It works with **C250 Cartridge Range**.



Specifications

Control Unit dimensions	170 x 176 x 145 mm / 6.69 x 6.93 x 5.71 in	Selectable Temperature	90 - 450 °C / 190 - 840 °F
Control Unit weight	2.91 Kg / 6.42 lb	Idle Temp. Stability (still air)	±1.5 °C / ±3 °F (Meets and exceed IPC J-STD-001)
Peak Power (tool)	130 W - 23.5 V	Temp. Accuracy	±3 % (Using reference cartridge)
Earthing Fuse	F 1.25A	Temp. Adjustment	±50 °C / ±90 °F (Through station menu setting)
Ref. - Voltage (AC) / Fuse	CA-9QG - 100V 50/60Hz / Main fuse: T2A	Tip to Ground Voltage/Resistance	Meets and exceed ANSI/ESD S20.20-2014 IPC J-STD-001F
	CA-1QG - 120V 50/60Hz / Main fuse: T2A		
	CA-2QG - 230V 50/60Hz / Main fuse: T1A		
Connections	USB-B connector for PC communications	Complies with CE standards.	
	RJ12 connector for remote control or FAE Fume Extractor connection	ESD Safe.	

CP Precision Rework Station

Ideal for soldering and reworking SMT chip components, small / medium SOP and dual line components.

Cartridge Exchanger

Align cartridges with the provided slots and use the tool's rotary system for further adjustment.

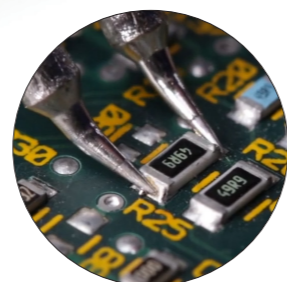


Antisplash membrane

Its design with slits allows simultaneous cleaning of both cartridges.

AM120 Adjustable Micro Tweezers

It provides a perfect solution for fast and precise SMDs rework of chip components and small/medium SOP from PCB assemblies. The adjusting system guarantees that the cartridges are equally aligned, with vertical and rotatory symmetry. It works with **C120 Cartridge Range**.



Specifications

Control Unit dimensions	170 x 176 x 145 mm / 6.69 x 6.93 x 5.71 in	Selectable Temperature	90 - 450 °C / 190 - 840 °F
Control Unit weight	2.8 Kg / 6.17 lb	Idle Temp. Stability (still air)	±1.5 °C / ±3 °F (Meets and exceed IPC J-STD-001)
Peak Power (tool)	80 W - 23.5 V	Temp. Accuracy	±3 % (Using reference cartridge)
Earthing Fuse	F 1.25A	Temp. Adjustment	±50 °C / ±90 °F (Through station menu setting)
Ref. - Voltage (AC) / Fuse	CP-9QF - 100V 50/60Hz / Main fuse: T2A	Tip to Ground Voltage/Resistance	Meets and exceed ANSI/ESD S20.20-2014 IPC J-STD-001F
	CP-1QF - 120V 50/60Hz / Main fuse: T2A		
	CP-2QF - 230V 50/60Hz / Main fuse: T1A		
Connections	USB-B connector for PC communications	Complies with CE standards.	
	RJ12 connector for remote control or FAE Fume Extractor connection	ESD Safe.	

CS Precision Desoldering Station

Ideal for desoldering small THT components and SMD pad cleaning.

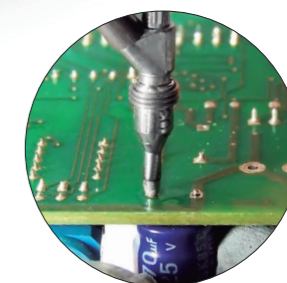
MS Electric Desoldering Module

Its optimized electronic suction system creates a vacuum peak at the startup in order to collect the solder before it cools down.



DS360 Micro Desoldering Iron

It is used for thin desoldering jobs of SMD or conventional components. DS360 is light and easy to clean and maintain. It works with **C360 Tip Range** and it includes five each of C360002 and C360004 Tips.



Specifications

Control Unit dimensions	170 x 176 x 145 mm / 6.69 x 6.93 x 5.71 in	Selectable Temperature	90 - 450 °C / 190 - 840 °F
Control Unit weight	4 Kg / 8.82 lb	Idle Temp. Stability (still air)	±1.5 °C / ±3 °F (Meets and exceed IPC J-STD-001)
Peak Power (tool)	40 W - 23.5 V	Temp. Accuracy	±3 % (Using reference cartridge)
Earthing Fuse	F 1.25A	Temp. Adjustment	±50 °C / ±90 °F (Through station menu setting)
Ref. - Voltage (AC) / Fuse	CS-9F - 100V 50/60Hz / Main fuse: T2A	Tip to Ground Voltage/Resistance	Meets and exceed ANSI/ESD S20.20-2014 IPC J-STD-001F
	CS-1F - 120V 50/60Hz / Main fuse: T2A		
	CS-2F - 230V 50/60Hz / Main fuse: T1A		
Vacuum	75% / 570 mmHg / 22.4 inHg	Flow Rate	9 SLPM
Connections	USB-B connector for PC communications	Complies with CE standards.	
	RJ12 connector for remote control or FAE Fume Extractor connection	ESD Safe.	

